

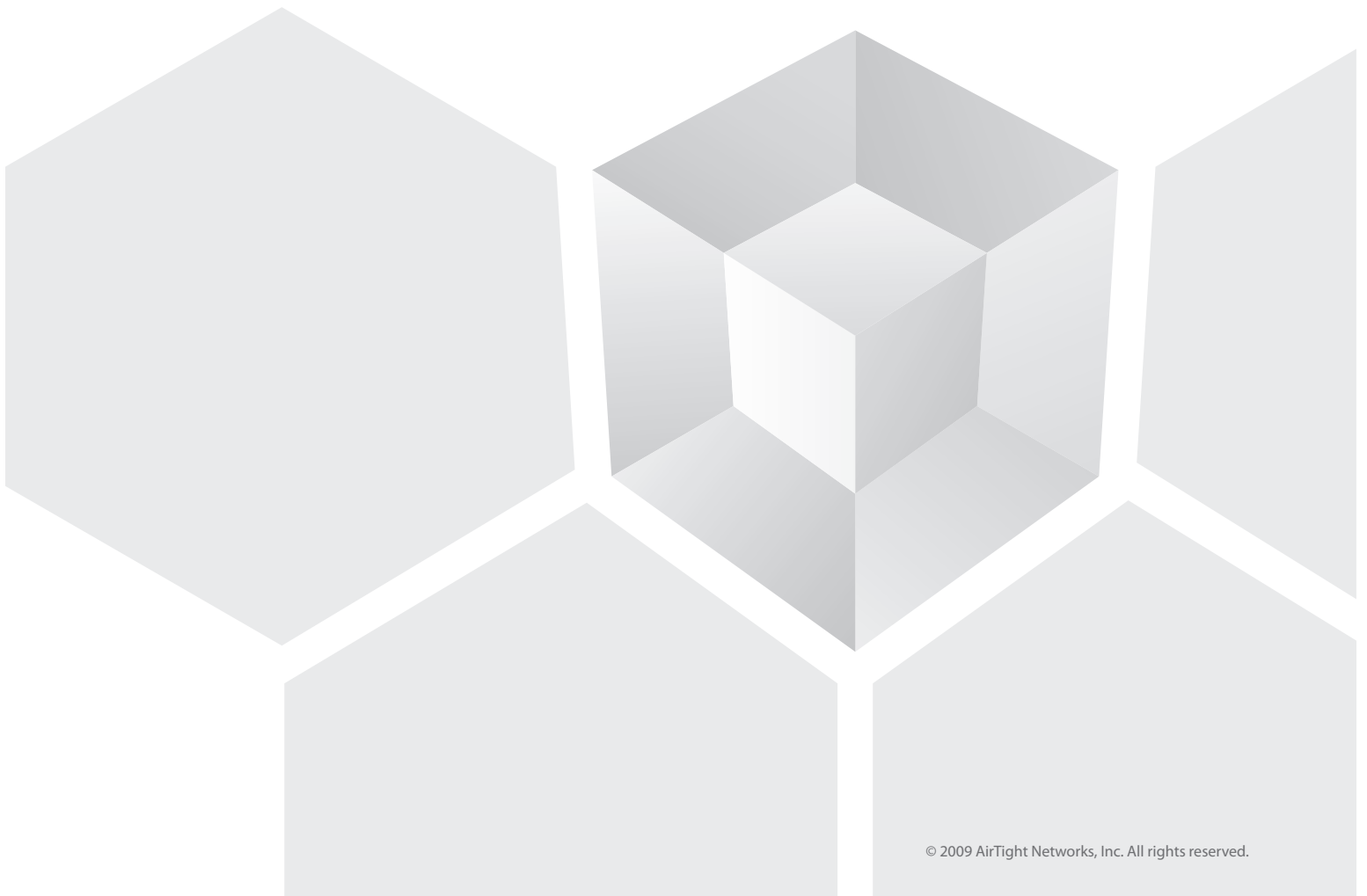


AirTight's SpectraGuard Enterprise and Cisco WLAN Controller Integration

A Whitepaper by AirTight Networks, Inc.

339 N. Bernardo Avenue, Mountain View, CA 94043

www.airtightnetworks.com





Overview

To enable organizations to leverage their investment in Cisco Wireless LAN infrastructure, AirTight Networks delivers powerful integration capabilities with its flagship product, SpectraGuard® Enterprise. This technical brief provides an overview of the integration between AirTight's SpectraGuard Enterprise and Cisco's Wireless LAN Controller (WLC) that operates with Lightweight Access Points (LWAPP APs)

SpectraGuard Enterprise, industry's leading Wireless Intrusion Prevention System (WIPS), protects enterprise networks worldwide against all wireless threats, delivers policy compliance auditing and reporting and 24/7 performance monitoring and troubleshooting.

Cisco Wireless LAN Controllers are standalone, integrated or modular devices that simplify the deployment and operation of wireless networks, helping to ensure smooth performance, enhanced security, and maximum network availability. They integrate into existing enterprise networks for advanced management capabilities and enhanced performance.

The integration between SpectraGuard Enterprise and Cisco Wireless LAN controllers, allows organizations to lower operational effort and deployment cost for Location Tracking by automatically synchronizing the device inventory between the two products and leveraging Cisco LWAPP APs as RF data sources for location tracking.



Lower operational effort



Lower deployment cost

Integration Benefits

AirTight integration with Cisco WLC provides the following benefits:

- Lower deployment and operational effort by
 - Leveraging the background scanning function of Cisco LWAPP APs to increase the visibility into the RF environment
 - Synchronizing AirTight's list of authorized devices with those managed by Cisco WLC and the devices visible to Cisco LWAPP APs managed by WLC
 - Automatic classification of devices freeing network and security administrators from the task of ensuring that the devices are classified and the security managed effectively on an ongoing basis
- Lower cost of deployment for Location Tracking by
 - Leveraging Cisco LWAPP APs as RF data sources, resulting in up to 30% less sensors for accurate location tracking

AirTight's SpectraGuard Enterprise and Cisco WLAN Controller Integration



SpectraGuard Enterprise

Device Auto Classification

APs Visible to Cisco WLC

Clients Visible to Cisco WLC

Location Tracking

- Facilitates Policy Compliance and Reporting by
 - Auditing authorized WLAN settings that are configured on the WLC for policy compliance
 - Reporting violations or deviations from these settings in pre-configured formats for easy PCI, SOX, HIPAA, GLBA, MITS and DoD policy compliance

Integration Features

The following are the features of the integration.

- **Automatic classification** allows administrators to import authorized devices from the Cisco WLC into AirTight SpectraGuard Enterprise and automatically classify:
 - Access Points (APs) managed by WLC as “Authorized APs”
 - APs visible in the background scan performed by LWAPP APs but not managed by the WLC as “External APs”
 - Clients that are associated to APs managed by the WLC as “Authorized Clients”
 - All other Clients visible in the background scan performed by LWAPP APs as “Unauthorized Clients”
- **Enhanced Location Tracking** allows administrators to leverage the RSSI of devices visible in the background scan performed by LWAPP APs to better locate threat posing devices.

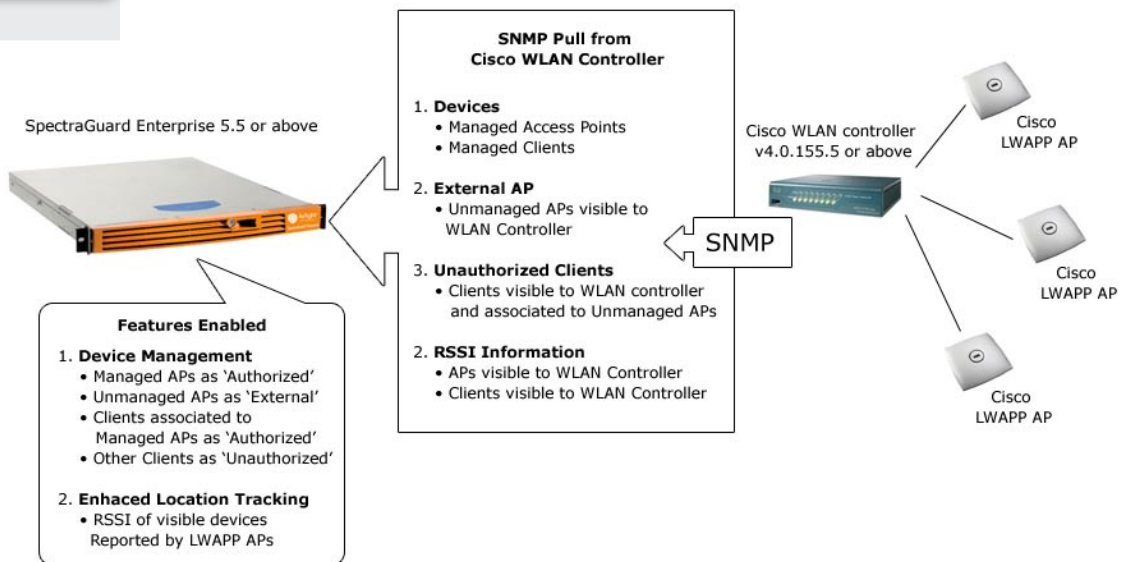


Figure 1 - WLC Integration Features



Integration Components

AirTight Components	Cisco Components	3rd Party Components
SpectraGuard Enterprise Server 5.5 or above	Cisco Wireless LAN Controller for LWAPP APs, version 4.0.155 or above including <ul style="list-style-type: none"> • Cisco Catalyst 3750 with integrated WLC • Cisco 2100 Series • Cisco 4400 Series Cisco Wireless Control System that operates with Wireless LAN controller for LWAPP APs	None

Cisco Components – What is supported and not supported

This integration supports only LWAPP APs and does not support Standalone (autonomous) APs. Please note that LWAPP APs operate in conjunction with Cisco Wireless LAN controllers and the Wireless Control System (WCS). Standalone (autonomous) APs are managed by CiscoWorks Wireless LAN Solution Engine (WLSE) or CiscoWorks WLSE Express.

Integration Architecture

Cisco LWAPP APs must be configured for background scan in order for this integration to work. SpectraGuard Enterprise administrative interface needs to be configured by the administrator to communicate with Cisco WLC over SNMP (using the IP address and Read community string for Cisco WLC).

SpectraGuard Enterprise makes periodic SNMP GETs from Cisco WLC for a list of managed devices, list of visible (unmanaged) devices and the RSSI of visible devices. SpectraGuard Enterprise updates its database based on the information received from the SNMP GETs, thus leveraging Cisco LWAPP APs.

Cisco WLC running WLC software version 4.0.155 or above supports publicly available MIBs that can be queried by external servers. SpectraGuard Enterprise (SGE) v5.5 or above utilizes these MIBs to extract relevant information from the WLC.

AirTight's SpectraGuard Enterprise and Cisco WLAN Controller Integration

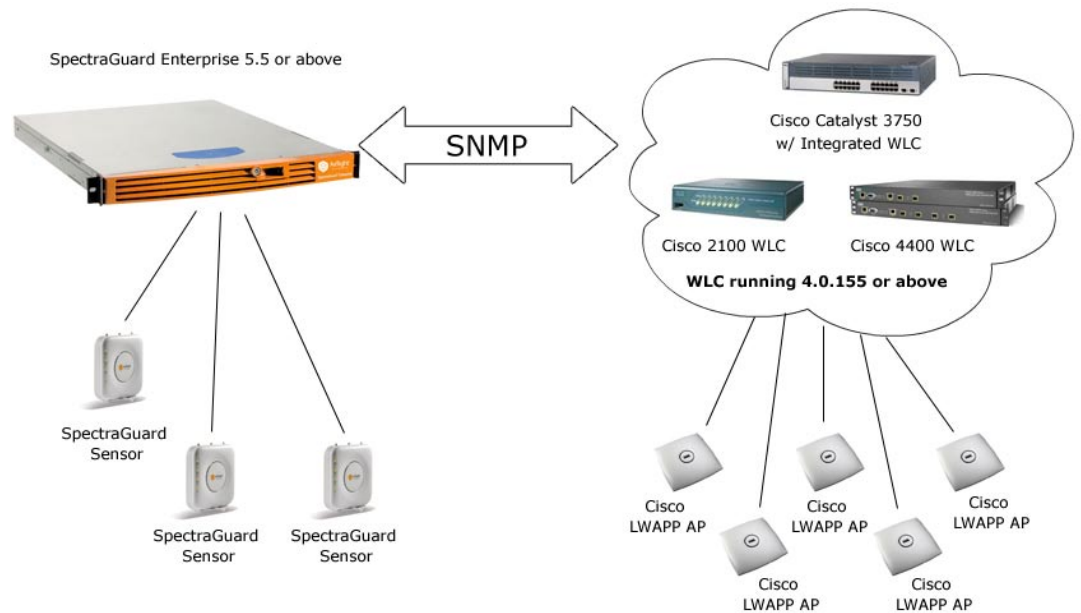


Figure 3 - WLC Integration Architecture

SGE allows end users to configure one or more Cisco WLCs. Users can define how frequently the SGE server should poll the WLCs for synchronization. The default frequency is 5 minutes with a minimum setting of 5 minutes and a maximum of 30 minutes.

The IP address or DNS name of the WLC server, its SNMP port and the read community string are required to configure the integration. With each poll, SGE will perform SNMP GET for the following information from each WLC. Users can also decide which of the following elements they would like to synchronize with the SGE server for each WLC:

1. Managed APs
2. Clients associated to Managed APs
3. APs and Clients visible in the background scans performed by LWAPP APs managed by the controller
4. RSSI of all devices associated with managed APs and devices visible in the background scans performed by LWAPP APs managed by the WLC

AirTight's SpectraGuard Enterprise and Cisco WLAN Controller Integration

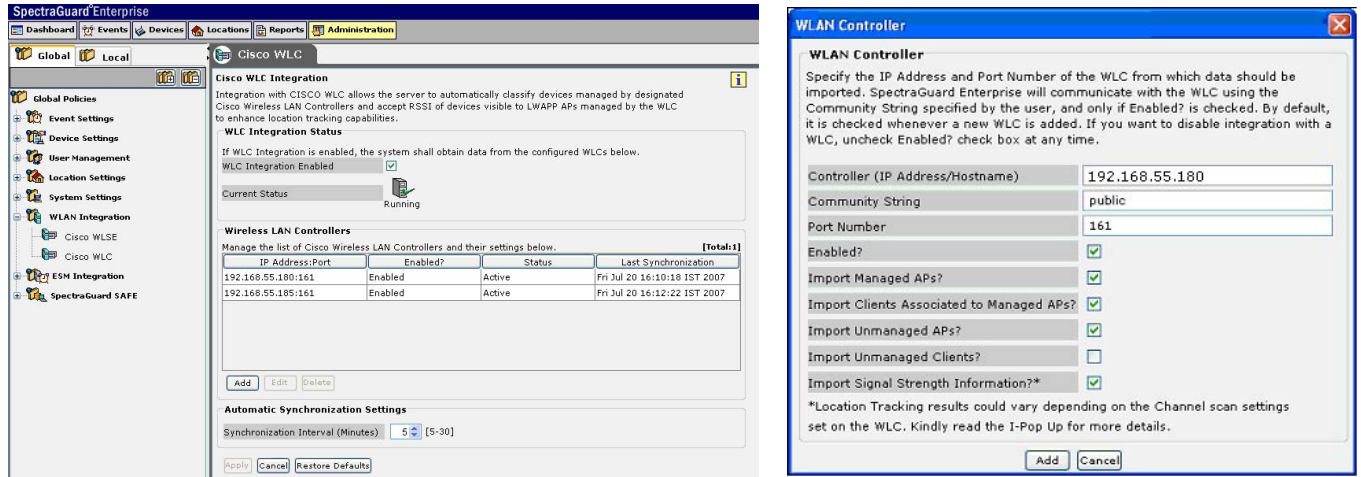


Figure 4 - WLC Integration Screen

Additional Information

For additional information, please contact sales@airtightnetworks.com. AirTight support is available 24/7 and can be contacted using support@airtightnetworks.com.

The Global Leader in Wireless Security Solutions

AirTight Networks, Inc. 339 N. Bernardo Avenue #200, Mountain View, CA 94043
 T +1.877.424.7844 T 650.961.1111 F 650.961.1169 www.airtightnetworks.com info@airtightnetworks.com

© 2009 AirTight Networks, Inc. All rights reserved. AirTight Networks and the AirTight Networks logo are trademarks, and AirTight and SpectraGuard are registered trademarks of AirTight Networks, Inc. All other trademarks mentioned herein are properties of their respective owners. Specifications are subject to change without notice.

